

Glenn Brown and Rebecca Warren: Collected Works

List of Works



Rebecca Warren (1965)

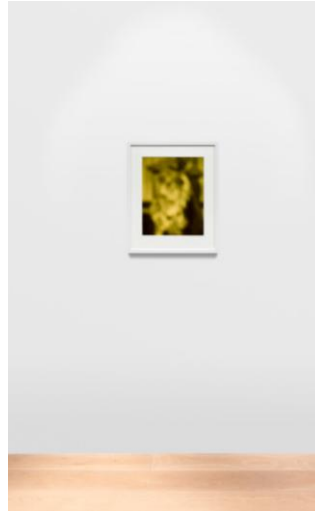
FS XX, 2006

3-part, mixed media vitrine

16 7/8 x 55 1/8 x 12 1/4 in (43 x 140 x 31 cm)

16 7/8 x 63 x 12 1/4 in (43 x 160 x 31 cm)

16 7/8 x 70 7/8 x 12 1/4 in (43 x 180 x 31 cm)



Glenn Brown (1966)

Paranoiac - Critical Method, 1998

Ilfochrome classic photograph, painted wood frame
framed: 25 5/8 x 21 3/8 in (65.2 x 54.2 cm)



Rebecca Warren (1965)

The Hostess, 2006

reinforced clay and plinth
98 1/2 x 34 x 37 1/2 in (250.2 x 86.4 x 95.3 cm)



Rebecca Warren (1965)

Cube, 2006

bronze, MDF and wheels

62 x 52 x 52 3/4 in (157.5 x 132.1 x 134 cm)



Rebecca Warren (1965)

H, 2006

reinforced clay, MDF and wheels

71 x 33 1/2 x 33 1/2 in (180.3 x 85.1 x 85.1 cm)



Rebecca Warren (1965)

Fido, 2006

reinforced clay, wood, pompom, plinth and Perspex
78 x 34 x 17 3/4 in (198.1 x 86.4 x 45.1 cm)

Glenn Brown and Rebecca Warren: Collected Works

List of Works



Rebecca Warren (1965)

Yes, Olga, 2006

reinforced clay, paint, plinth and Perspex
84 1/2 x 24 x 61 in (214.6 x 61 x 154.9 cm)



Glenn Brown (1966)

The Sound of Music, 1997

oil on acrylic over plaster, vitrine
sculpture: 29 1/4 L x 16 W x 17 1/2 H in (73.7 x 40.6 x 44.5 cm)
overall: 62 x 34 x 21 in (157.5 x 86.4 x 53.4 cm)



Glenn Brown (1966)

The Ever Popular Dead (after 'Jupiter Cloudscape' 1982 by Adolf Schaller),
2000

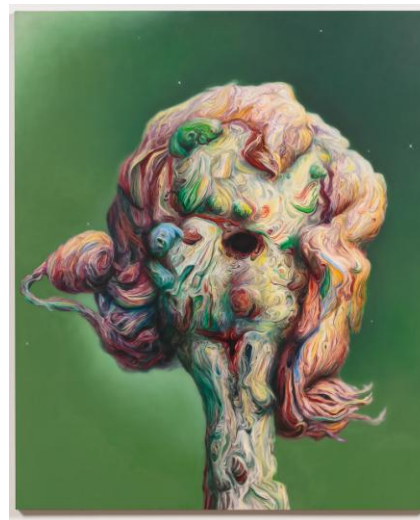
oil on canvas
86 5/8 x 132 5/8 in (220 x 337 cm)



Glenn Brown (1966)

They Threw Us All in a Pit and Built a Monument on Top (part 1 and 2), 2003

oil on panel
left: 51 5/8 x 34 5/8 in (131 x 88 cm) oval
right: 60 3/8 x 40 3/4 in (153.5 x 103.5 cm) oval



Glenn Brown (1966)

Seventeen Seconds, 2005

oil on panel
58 1/4 x 48 in (148 x 122 cm)



Glenn Brown (1966)

Zombies of the Stratosphere, 1999

oil on shaped mdf panel, steel
61 3/4 x 90 1/2 in (157 x 230 cm)

Glenn Brown and Rebecca Warren: Collected Works

List of Works



Glenn Brown (1966)
Seligsprechung, 2000
oil on panel
33 1/2 x 26 5/8 in (85 x 67.5 cm) oval



Glenn Brown (1966)
Anaesthesia, 2001
oil on panel
41 1/2 x 32 5/8 in (105.5 x 83 cm)