

Ian Wallace: Collected Works

List of Works
May 27th – September 30th, 2017



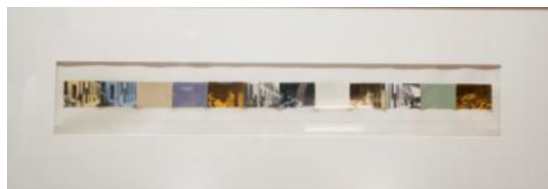
Poverty 1982, 1982
oil based silkscreen over acrylic paint on canvas, 8 panels
overall: 71 x 376 in (180 x 955 cm)



Poverty Maquettes, 1981
8 xerox paper on coloured construction paper
each: 8 1/2 x 5 1/2 in (21.6 x 14 cm)



Poverty 1980, 1980
16mm film transferred to digital
dimensions variable



Study for Installation at Victoria Art Gallery, 1984
photocopies and acetate on paper
framed: 19 x 47 inches (48.2 x 119.4 cm)



The Idea of the University I-XVI, 1990
photolaminate with acrylic on canvas, 16 panels
each: 60 x 60 in (152.4 x 152.4 cm)



La Piscina, Valencia, 1990
photolaminate with acrylic on canvas
48 x 48 in (121.92 x 121.92 cm)

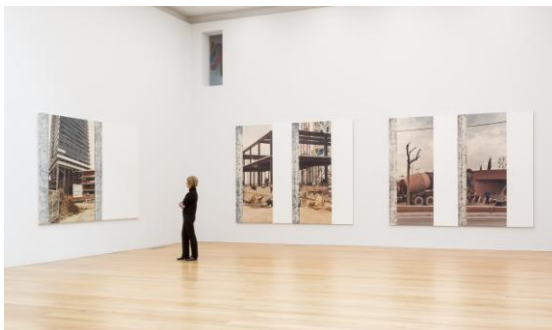
Ian Wallace: Collected Works

List of Works

May 27th – September 30th, 2017



Studies for Construction Site (The Barcelona Series) I-V, 1991
ink, charcoal, and xerox prints on paper in 5 parts
each: 20 x 26 in (50.8 x 66 cm)



Construction Site (The Barcelona Series I-V), 1991
photolaminate with acrylic and ink monoprint on canvas, 5 diptychs
I, overall: 80 x 120 in (203.2 x 304.8 cm)
II, overall: 96 x 120 in (243.84 x 304.8 cm)
III, overall: 80 x 120 in (203.2 x 304.8 cm)
IV, overall: 96 x 120 in (243.84 x 304.8 cm)
V, overall: 80 x 120 in (203.2 x 304.8 cm)



El Fronton, 1990
photolaminate with acrylic on canvas, 4 panels
each: 60 x 60 in (152.4 x 152.4 cm)



Untitled (Monoprint with Burgundy), 1990
acrylic with oil ink monoprint on canvas
96 x 48 in (243.84 x 121.92 cm)



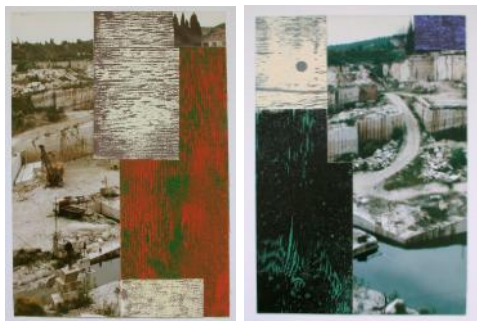
Untitled (Monoprint with Mustard), 1990
acrylic with oil ink monoprint on canvas
96 x 48 in (243.8 x 121.9 cm)



Untitled (Monoprint with Green), 1990
acrylic with oil ink monoprint on canvas
96 x 48 in (243.8 x 121.9 cm)

Ian Wallace: Collected Works

List of Works
May 27th – September 30th, 2017



The Quarry, Serre di Rapolano I and II, 1998
monoprint on canvas with c-print on paper panels, diptych
each: 20 x 14 1/2 in (50.8 x 36.8 cm)



Untitled (White Monochrome with Orange Rectangle), 1968
acrylic on canvas
76 x 41 x 1 1/2 in (193 x 104.1 x 3.8 cm)



The Studio, 1977
black and white silver print
print: 44 x 57 in (111.7 x 144.8 cm)
framed: 49 7/8 x 62 1/2 in (126.7 x 158.7 cm)



The Calling, 1977
black and white silver print
print: 46 1/4 x 57 1/2 in (117.4 x 146 cm)
framed: 52 x 63 in (132 x 160 cm)



Self Portrait Sleeping, 1979
unique colour polaroid
print: 4 1/4 x 3 1/2 in (10.8 x 8.9 cm)
framed: 11 5/8 x 10 5/8 in (29.5 x 26 cm)